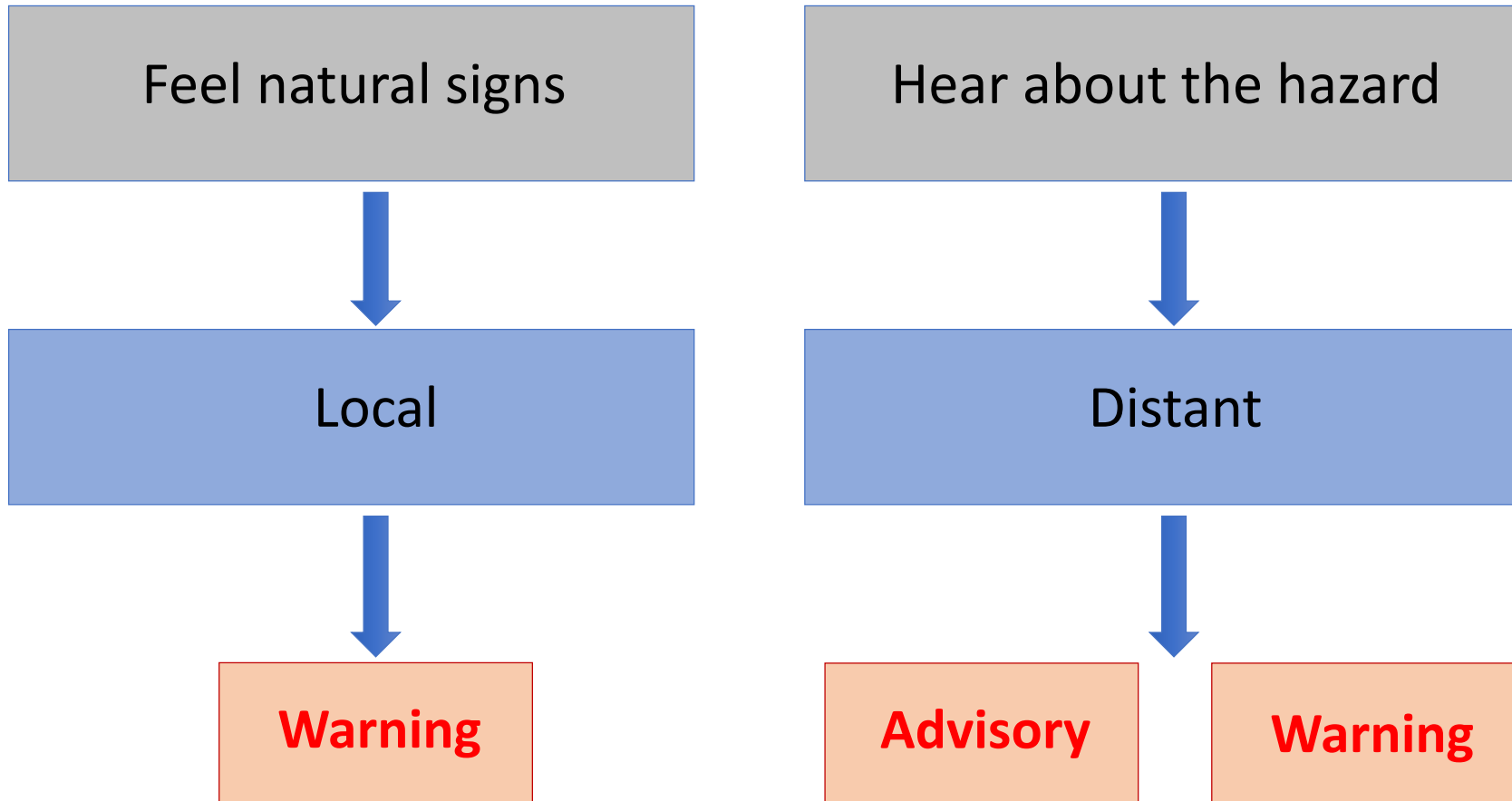


Tsunami Current & Pedestrian travel time maps

Maritime Tsunami Hazard



Distant Sources:

Southcentral Alaska –
Cascadia, Southern
Chile

Aleutian Islands –
Cascadia, Northern
Kamchatka

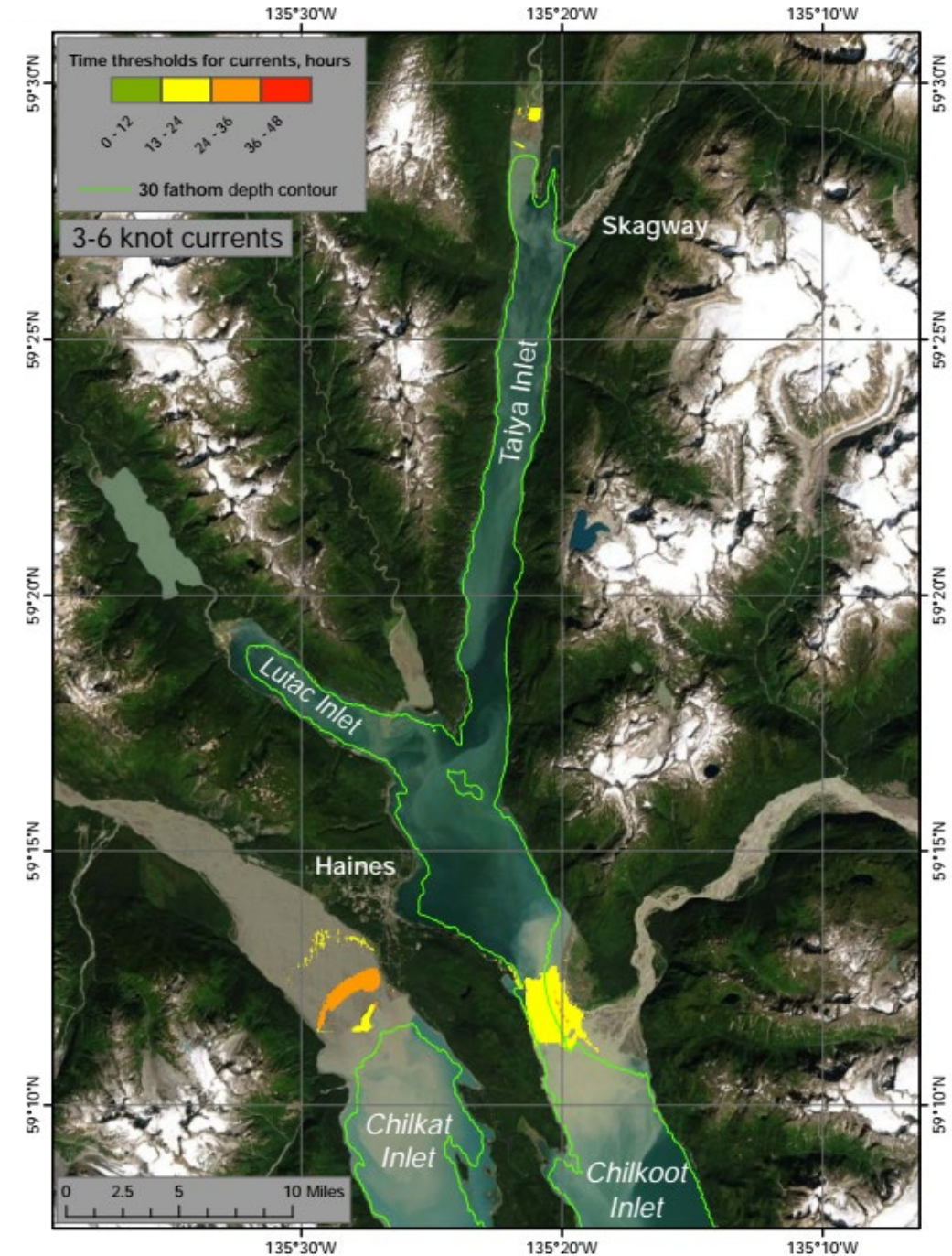
Southeast Alaska –
Bonin Islands,
Kodiak-Shumagin sector,
Prince William Sound

Distant source tsunami

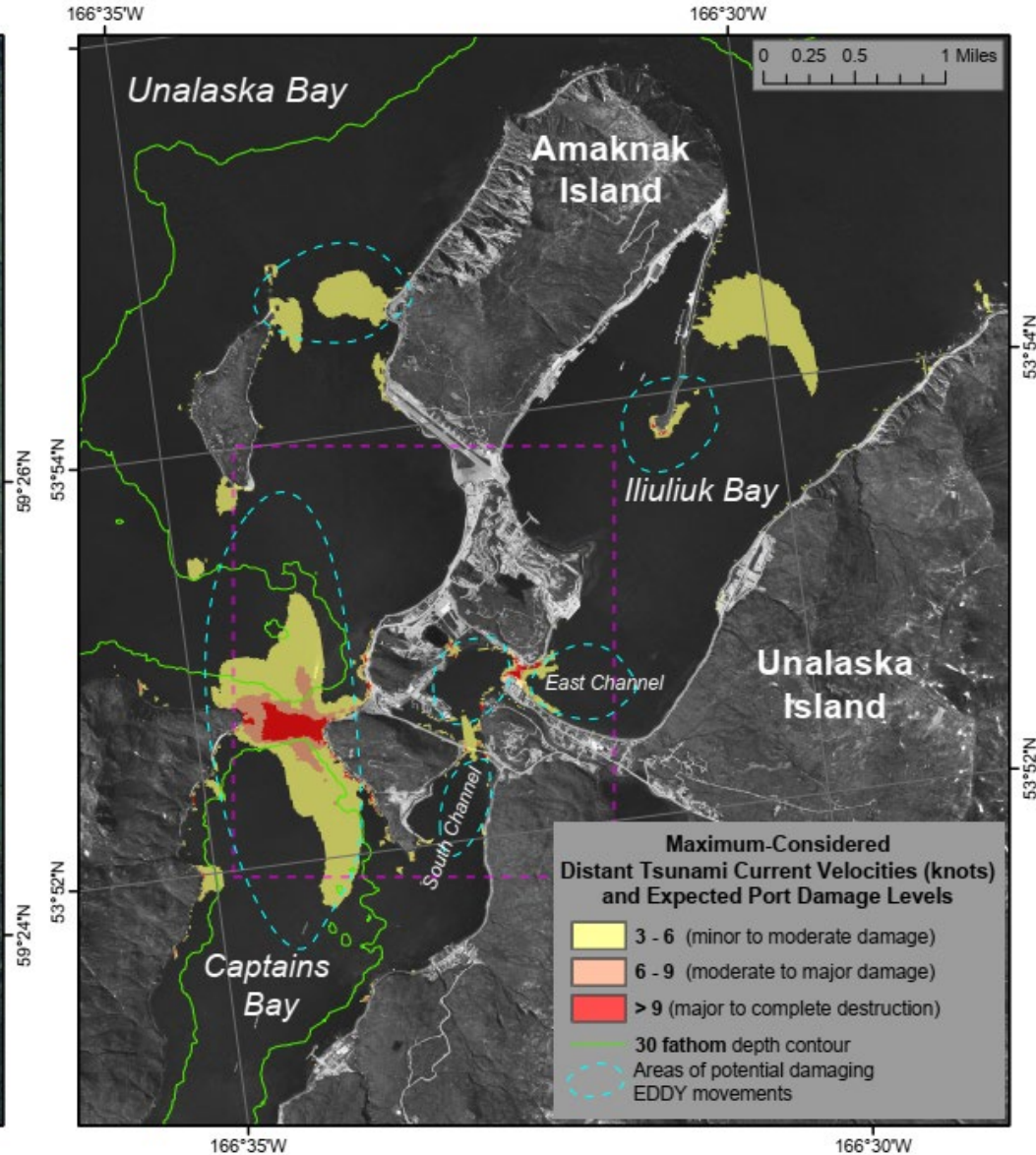
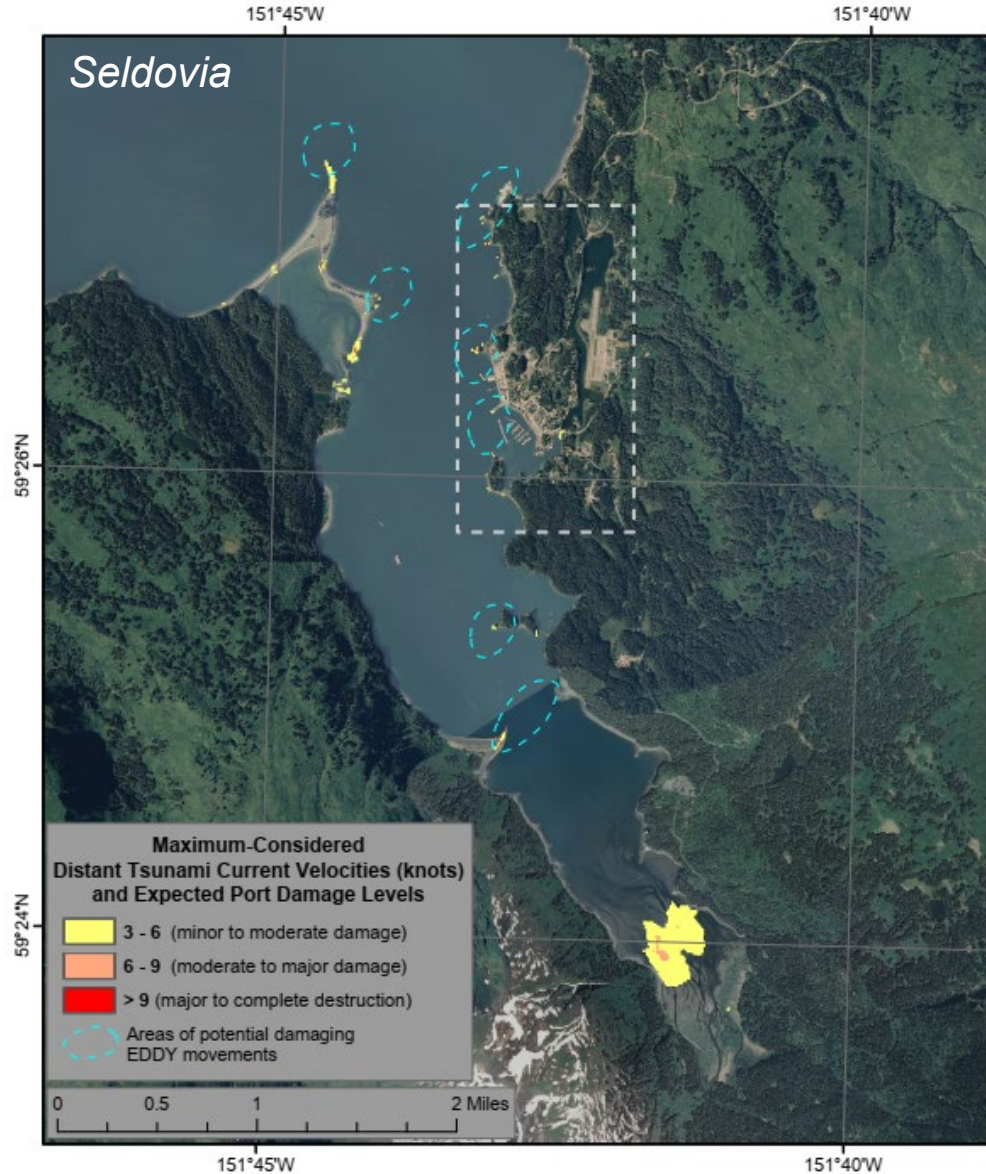
Products:

1. Maximum water level
2. Maximum considered current velocity
3. Time thresholds for 3-6, 6-9 and 9+ knots

- Results from ALASKA & FUNWAVE models are aggregated
- Sources: Cascadia, Southern Chile, Kuril-Kamchatka
- Locations around sharp protruded objects are highlighted



Distant source tsunami: Current velocity maps



Current velocity maps help to reveal what areas are more dangerous than others during the tsunami

Local source tsunami

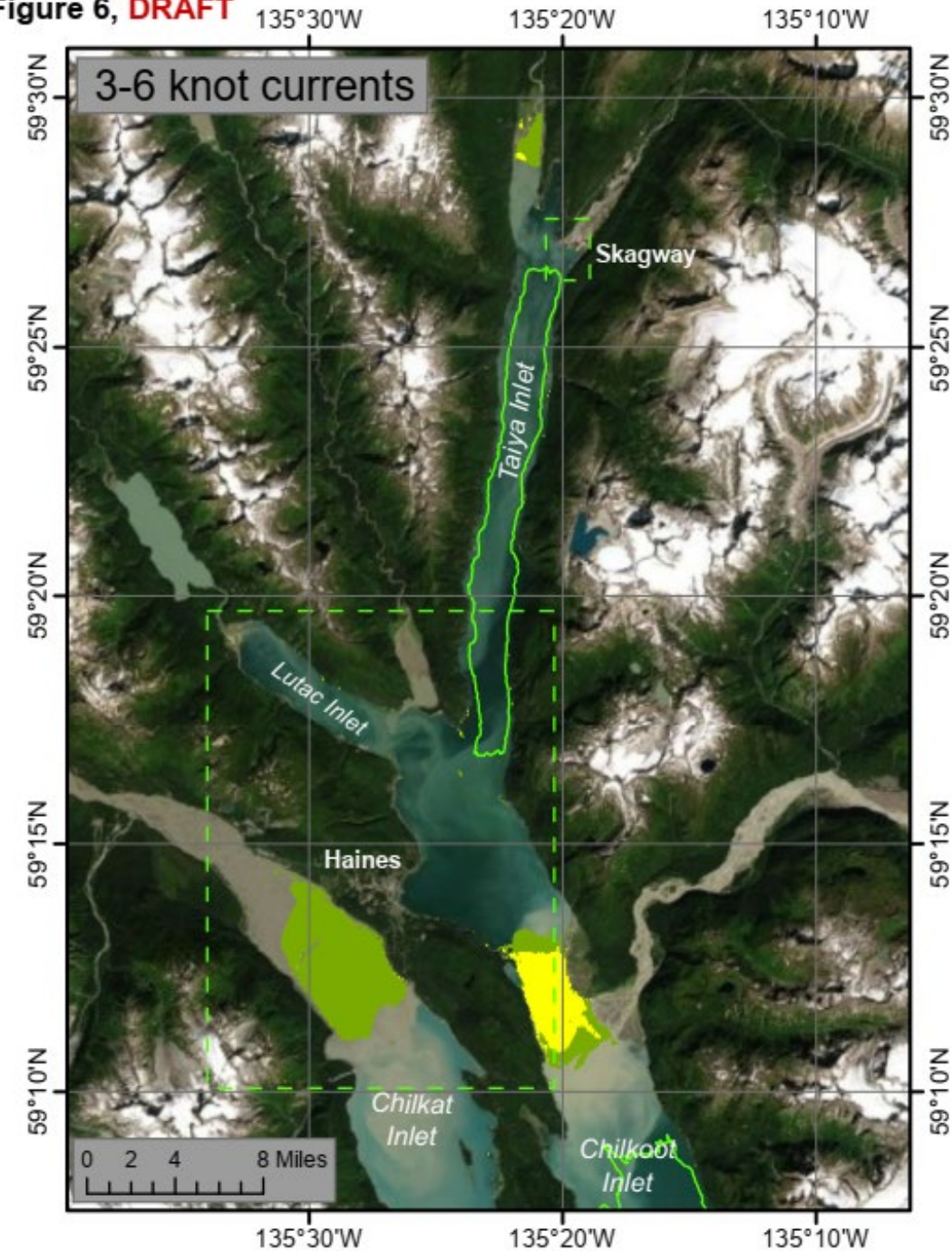
Products:

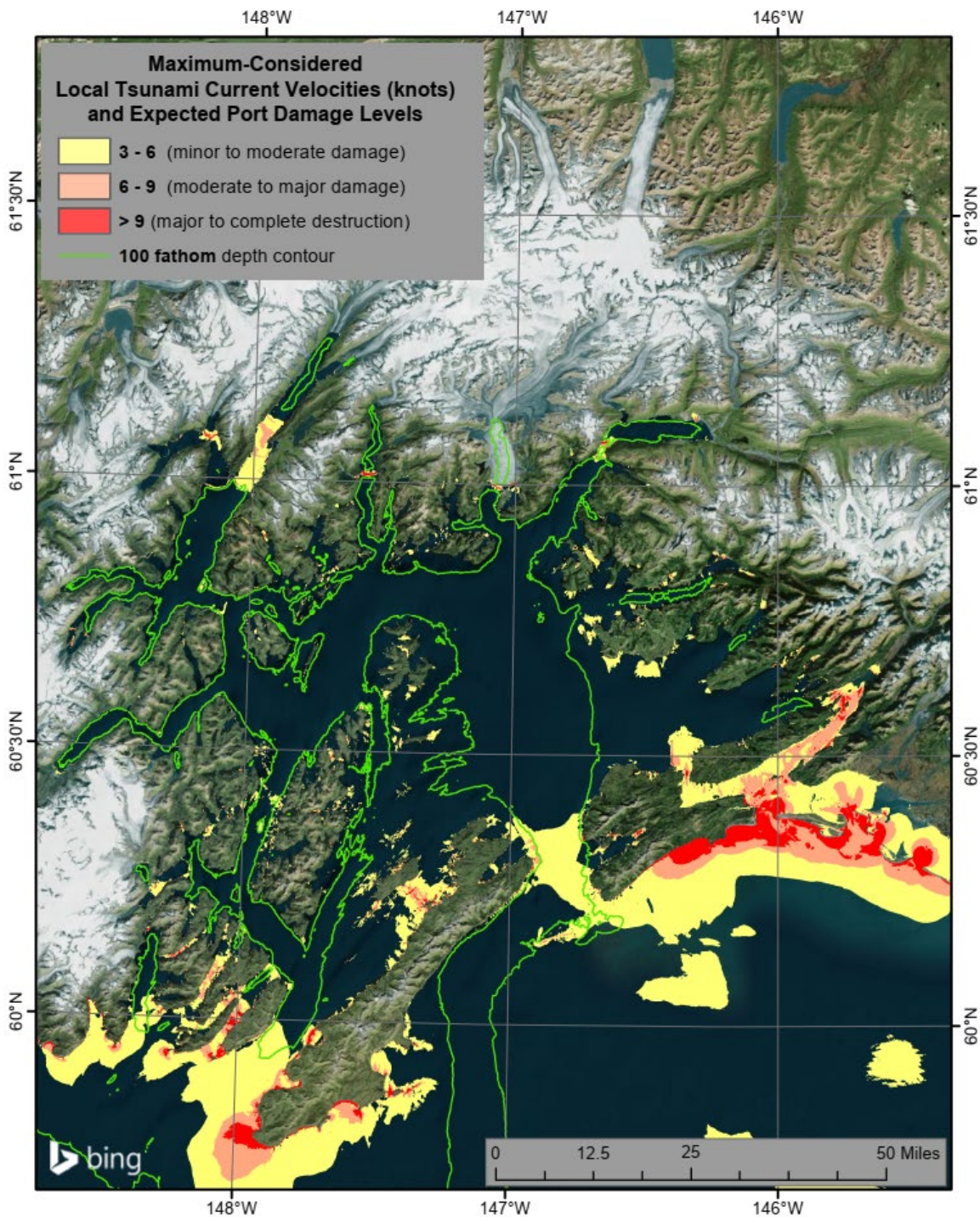
1. Maximum water level
2. Maximum considered current velocity
3. Time thresholds for 3-6, 6-9 and 9+ knots

- Results from ALASKA & FUNWAVE models are aggregated
- Sources: two scenarios in the Gulf of Alaska
- Locations around sharp protruded objects are highlighted

*Around
commu*

Figure 6, **DRAFT**



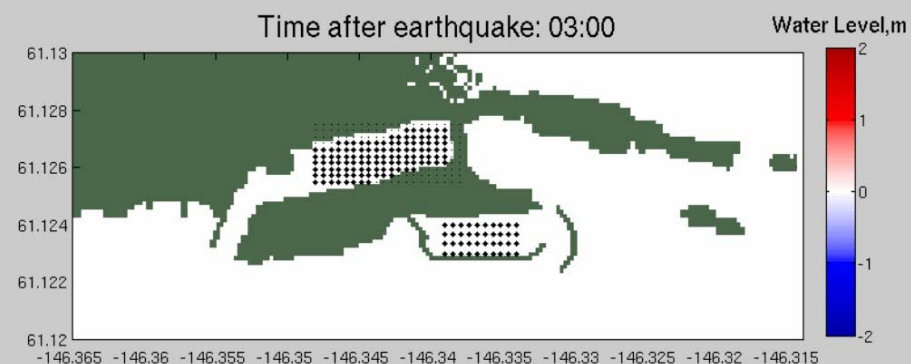
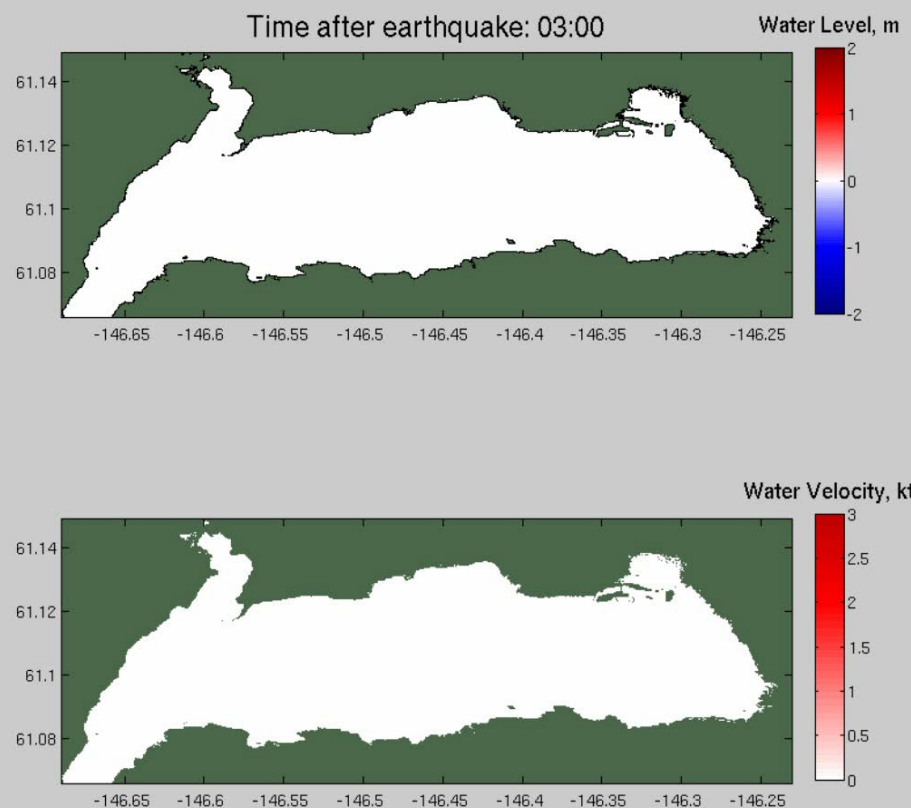


Local source tsunami: Current velocity maps

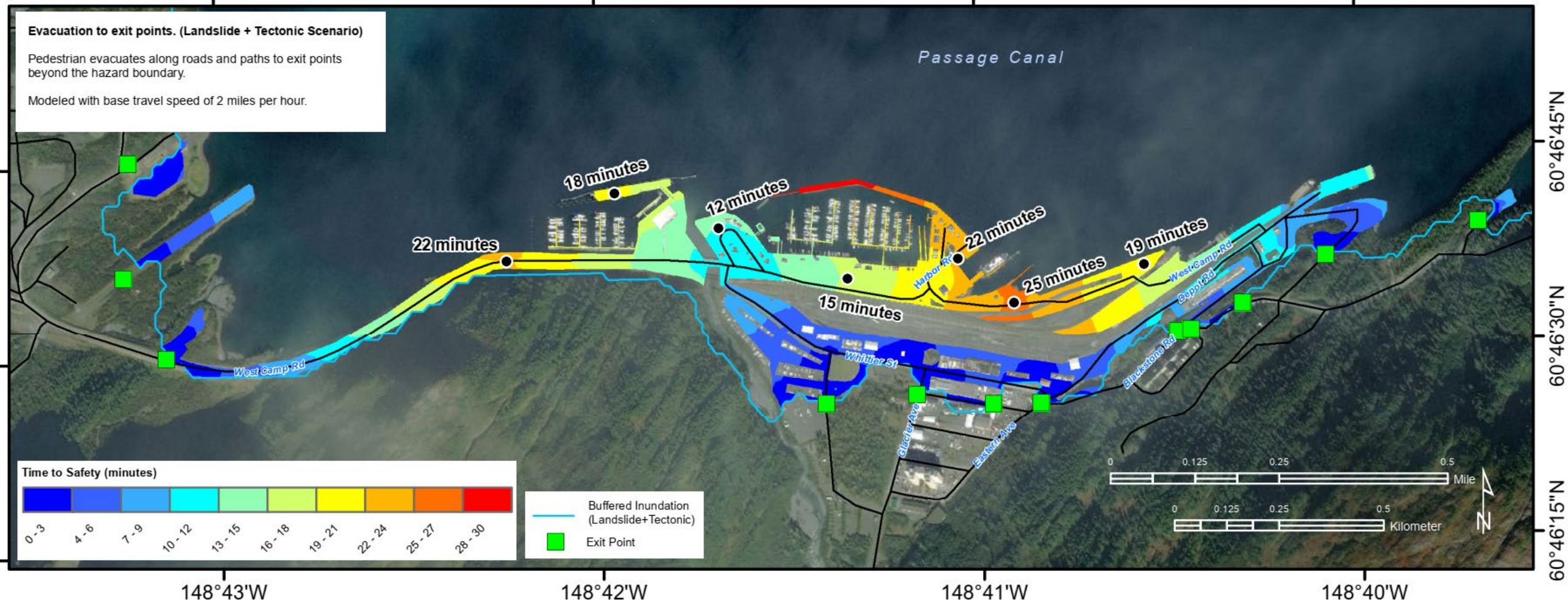
Current velocity maps help to reveal what areas are more dangerous than others during the tsunami. Show areas which to avoid and get away from.

Animations are helpful for public to see the threat

Distant source tsunami in Valdez:



Pedestrian travel time maps, e.g for Whittier



Help to decide whether the travel time to safety is adequate and if additional exit points are required