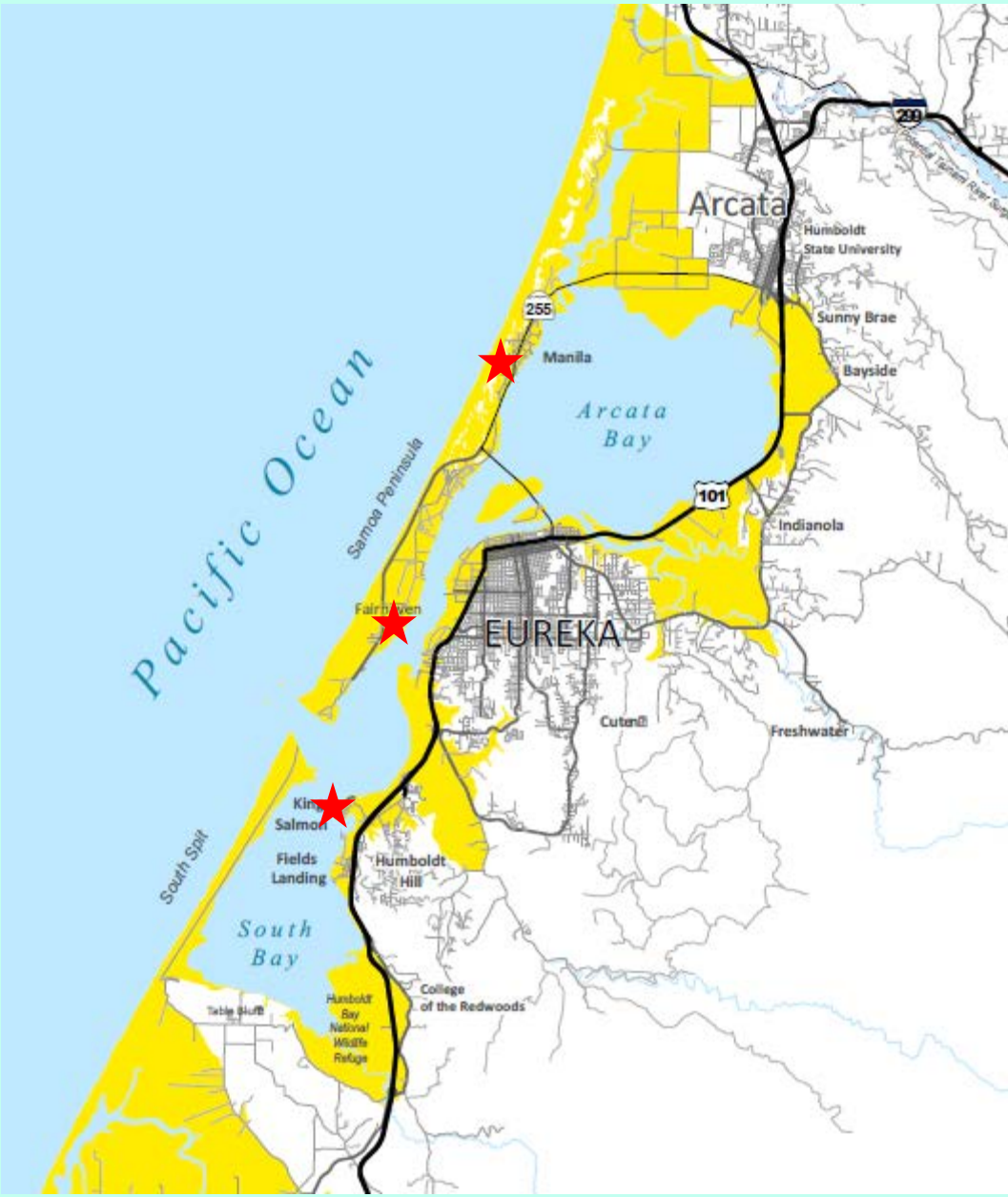


Barriers to evacuation:





Manila
Fairhaven
King Salmon

Manila: MIT-4 ✓



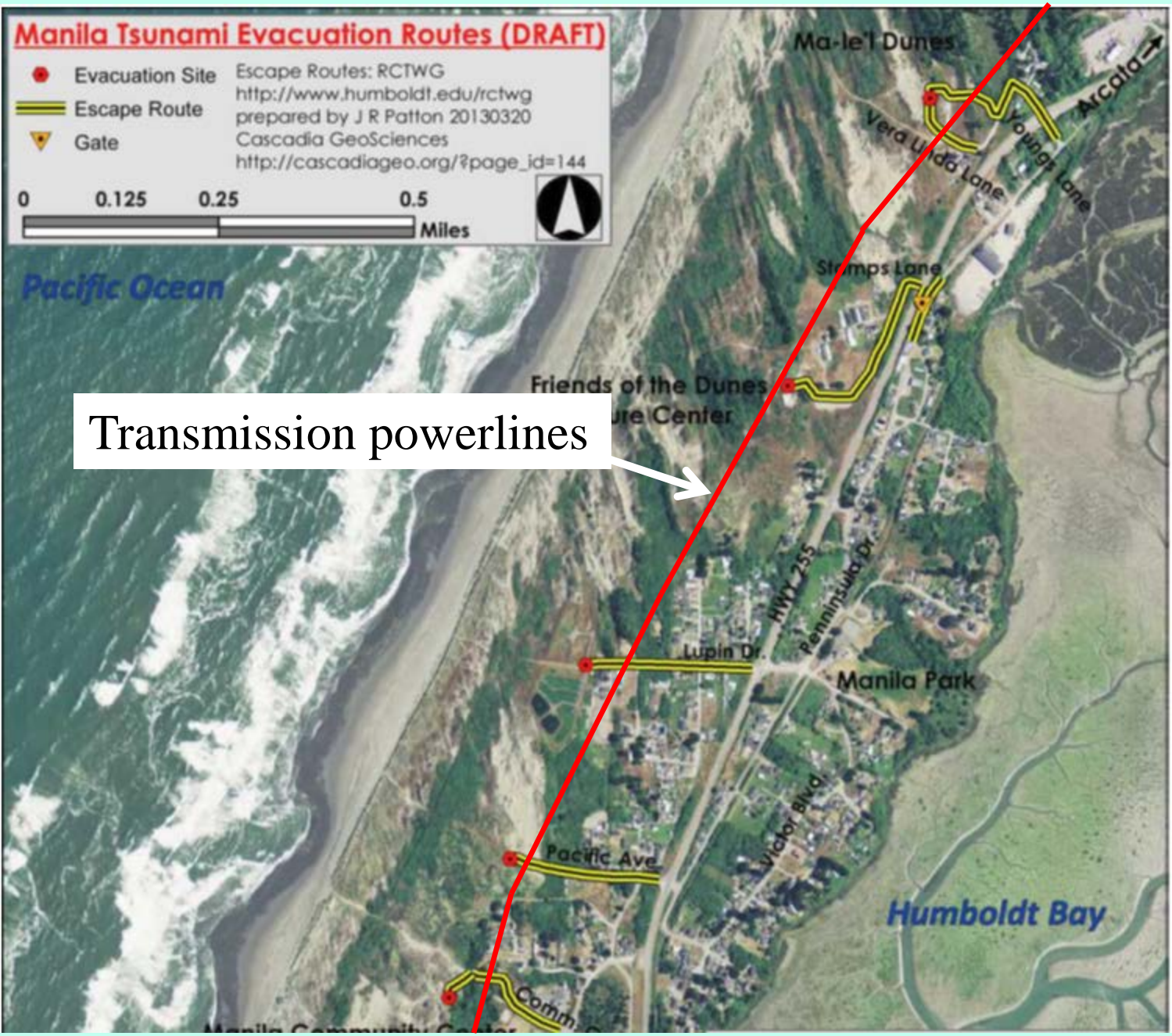

Manila Tsunami Evacuation Routes (DRAFT)

● Evacuation Site Escape Routes: RCTWG
<http://www.humboldt.edu/rctwg>
prepared by J R Patton 20130320
Cascadia GeoSciences
http://cascadiageo.org/?page_id=144

== Escape Route

▼ Gate

0 0.125 0.25 0.5
Miles



Transmission powerlines

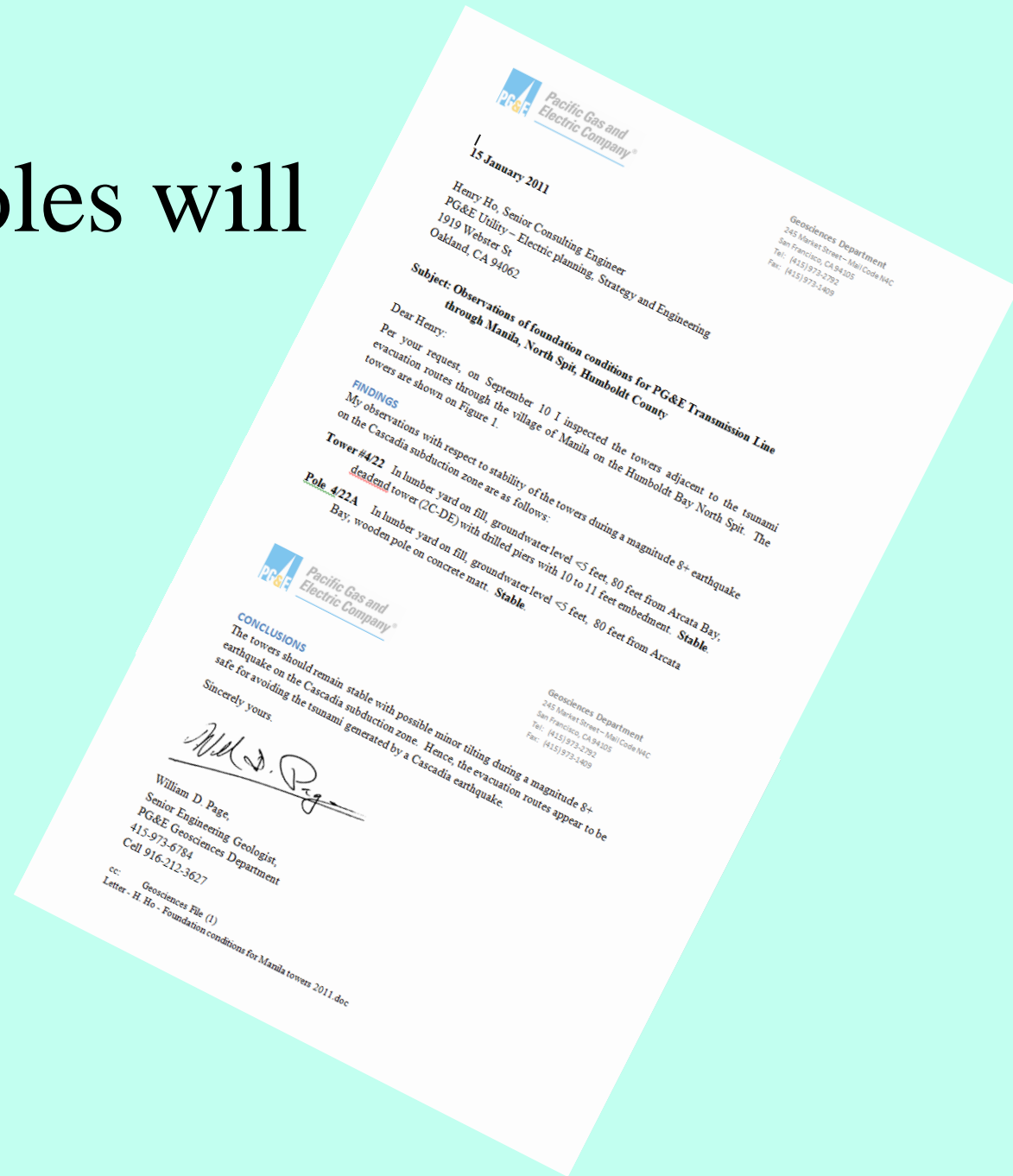




PG&E:

“The power poles will stand”

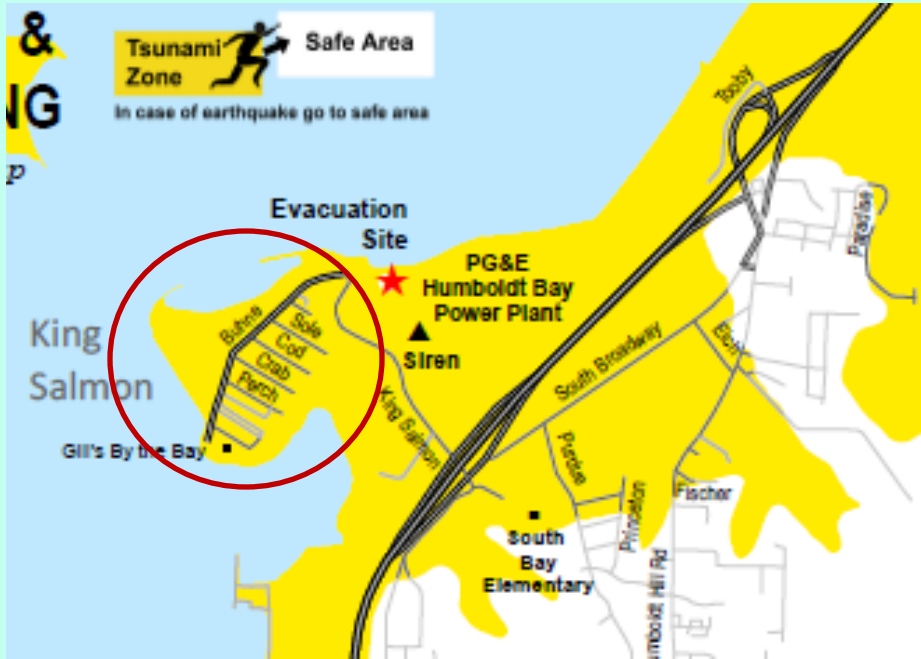
MIT-5



King Salmon

High ground





PG&E:
“Permission to pass
granted”

MIT-5 ✓





Stairs to top of water plant

gates

Note that the water plant is not an official evacuation site.



Go Kit

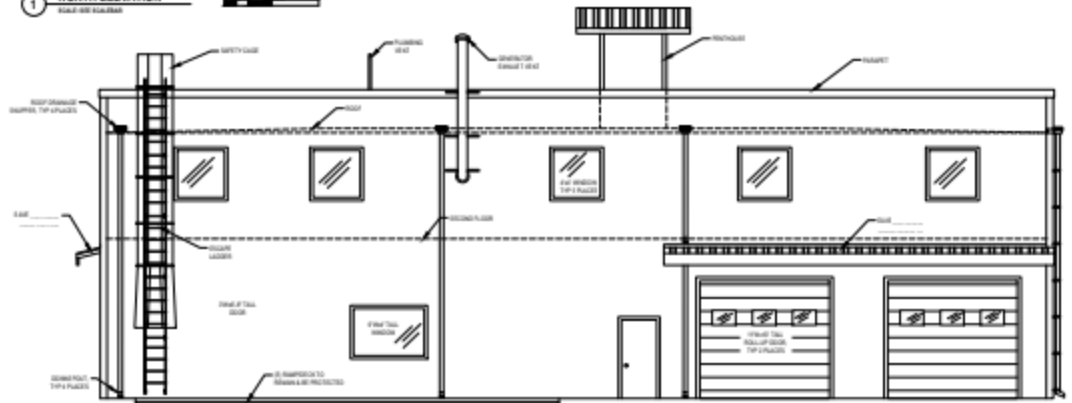
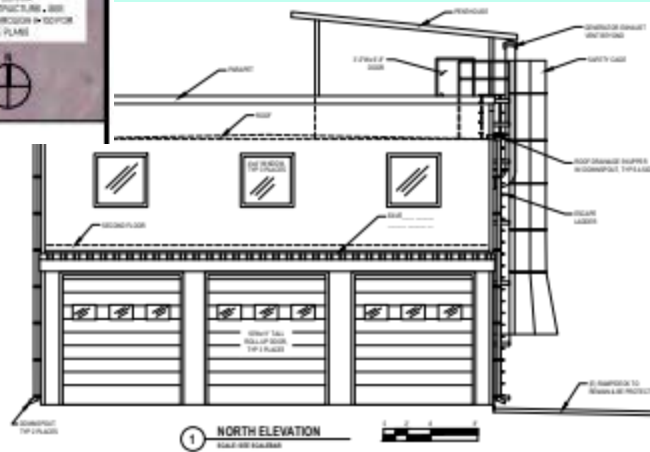
Bolt Cutters for gate



Proposed Evac Structure



FIRE STATION SITE DETAIL



Fairhaven MIT-6 challenge:

\$

\$ 4,000,000 grant

\$1,000,000 matching

Fairhaven: Regulatory



Recovery Plans:
Manila
King Salmon
Fairhaven