



Puerto Rico Emergency Management and Disaster Administration Bureau

Hurricane Maria Recovery Update



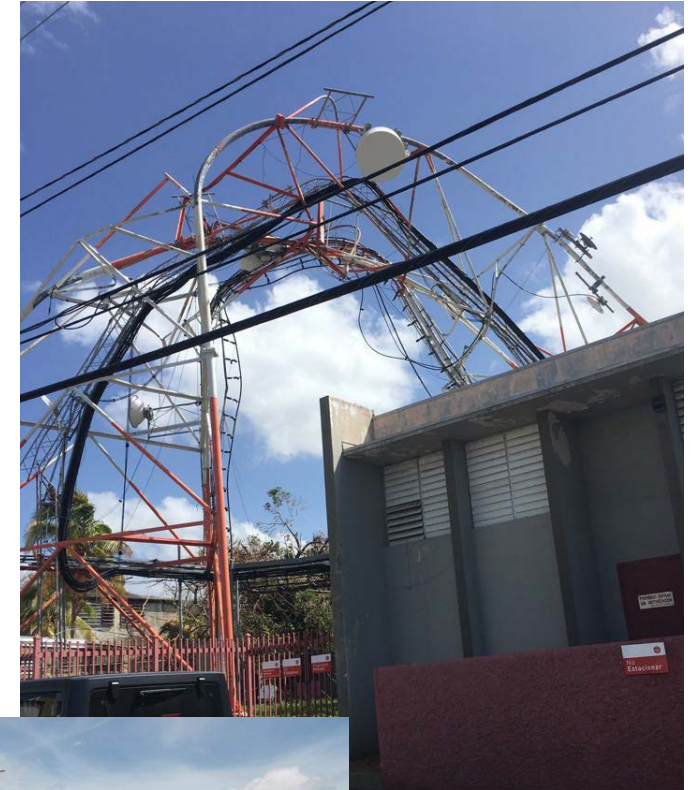
Joel Figueroa Betancourt
Operations and Response
Director



Hurricane Maria Response

Challenges from the Emergence Management perspective

- We were blind when we lost all communications
- No communication between Local, Regional and State EOC's.
- Lack of coordination between State Agencies, Municipalities and Federal Government
- No synchronizations of missions at all levels during the response, absence of mission assignment procedures and too many free-lance.
- Lack on ICS structure





Challenges from the Emergence Management perspective (Cont.)

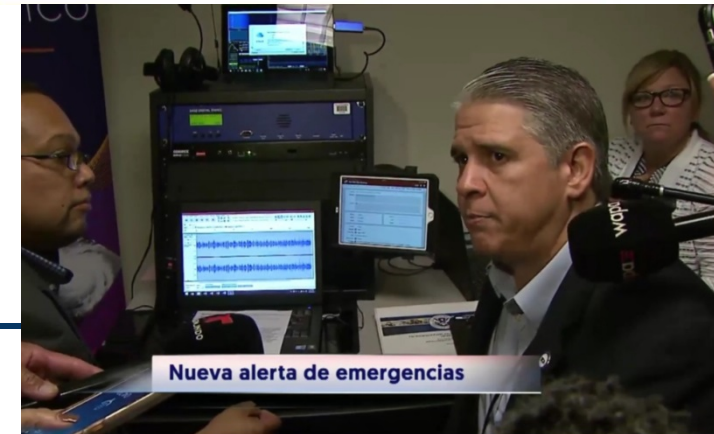
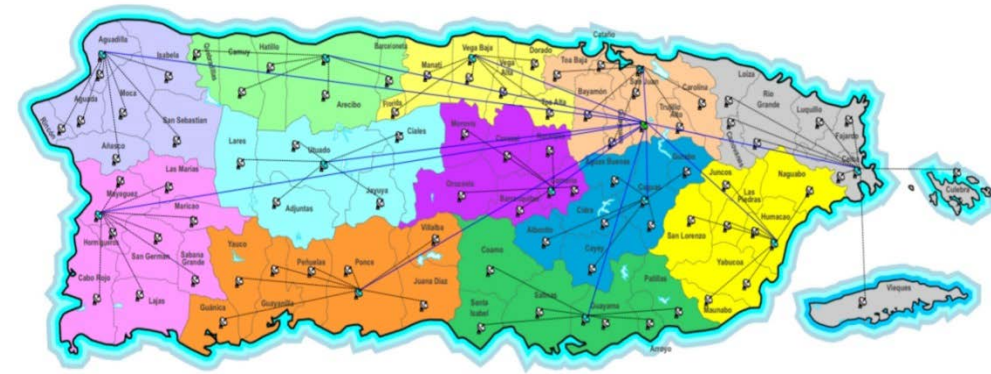
- Poor or no communication between State and Federal ESF's when were integrated at the JFO
- Emergency Plans fell short to address the catastrophic event
- No logistics (fuel, commodities, etc.)





Current Situation:

- State EOC with better integration of the Federal and private sector
- Radio communications (100 watt radios for 78 municipalities, PRFD, PRPD, PREMS, PREMA and Hospitals)
- PREMA has its own IPAWS and with a second station or redundancy on the 9-1-1 Center
- Tsunami Alert sirens – only 9 of 48 Tsunamis ready municipalities has working sirens





What we are doing different?

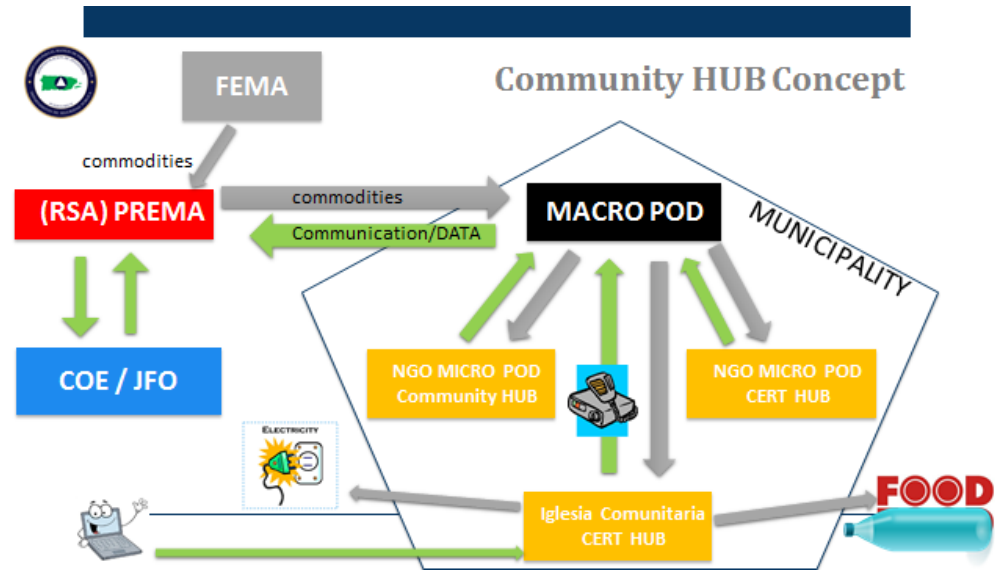
- New operations at the State EOC
 - NQS, Command and Control
 - ESF/Branches
 - FEDERAL ESF's seated and working together with State ESF as partners
 - CAD for missions assignment
- New State Catastrophic Plan synchronized with the plans of the municipalities and FEMA
- Private sector with their own ESF (17) at the State EOC with permanent representation. Also integration of the ESF-16 and ESF-18





What we are doing different?

- Guajataca DAM emergency alerting system integrated with IPAWS
- State warehouses with commodities
- Community Hub concept as a PREMA response





Questions?

