

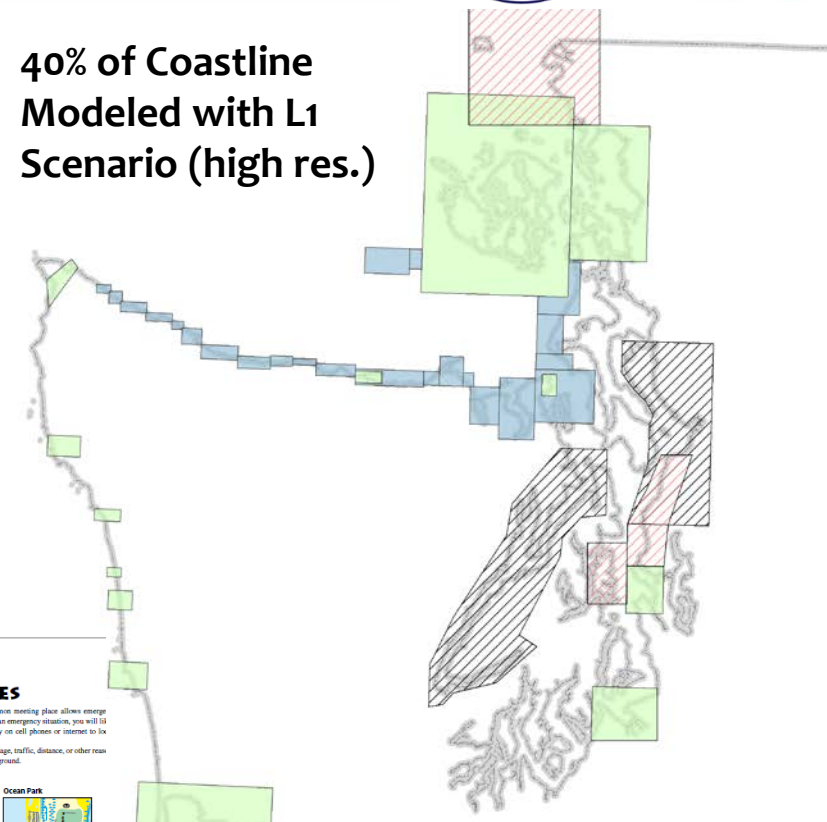
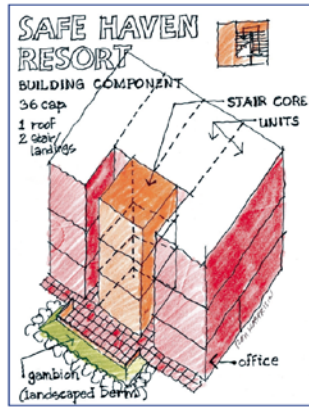
# Tsunami Project History- WA



**Maximilian Dixon – WA EMD**  
**Tim Walsh – WA DNR**  
**Corina Forson – WA DNR**

**40% of Coastline  
 Modeled with L1  
 Scenario (high res.)**

## TSUNAMI VERTICAL EVACUATION ON THE WASHINGTON COAST



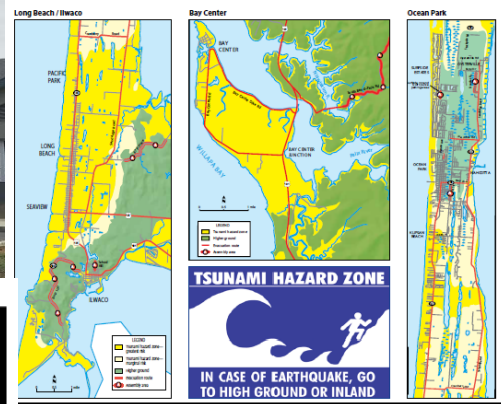
**RUTA DE  
 EVACUACION**



Ocosta Elementary School

### PACIFIC COUNTY TSUNAMI EVACUATION ROUTES

Evacuation recommendations are issued when authorities believe there is a real threat from a tsunami. Take an evacuation recommendation seriously — it may save life. The following maps show areas likely to be inundated by tsunamis in Pacific County. Current evacuation routes for Pacific County are shown in red. Local officials might recommend specific routes depending on the situation. Illustrate yourself and your family with your local evacuation routes and nearby assembly stations. Assembly areas are designated locations where people gather after returning from an evacuation. A common meeting place allows emergency officials to focus response on these areas. In an emergency situation, you will lose access to communications, so don't rely on cell phones or internet to fix these issues last minute. If you cannot evacuate by car due to damage, traffic, distance, or other reasons evacuate on foot directly to the nearest high ground.



**Modeled with L1**

- Fine grid (20 m)
- Coarse grid (62 m)
- Projects 2016
- Projects 2017 (proposed)

# Current Projects - WA

ZONA DE PELIGRO  
DE TSUNAMI

EN CASO DE TERREMOTO  
MUÉVASE A UN LUGAR ALTO  
O TIERRA ADENTRO

- \* **TsuInfo Alert newsletter**
- \* **Tsunami Hazard Maps of the San Juan Islands, WA**
- \* **Inundation modeling**
- \* **Collaboration with Quinault Indian Nation**
- \* **Current modeling for ports of Seattle and Tacoma**
- \* **Briefed the Washington Ferry System, Puget Sound Harbor Safety Committee, and the U.S. Coast Guard**
- \* **Spanish outreach**
- \* **Outreach to ports of Seattle and Tacoma**
- \* **Tribal Nation outreach and evacuation drills**
- \* **Evacuation drills for Great ShakeOut**
- \* **Tsunami Ready renewals**
- \* **AHAB sirens: Whatcom, Grays Harbor and Pacific Counties**
- \* **Updated communication capabilities for AHAB sirens**
- \* **Spanish and English tsunami signs**
- \* **Updated Safe Haven Project report**



# Proposed Activities for FY17 NTHMP grant



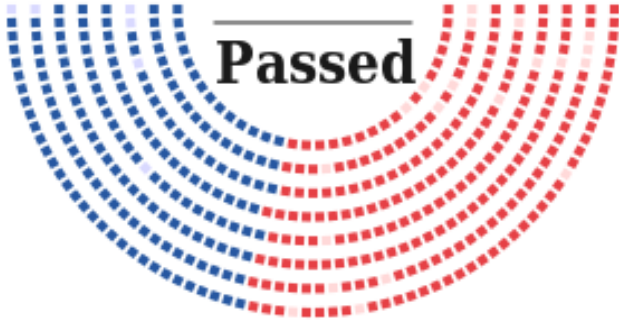
1. Sustain key Program Personnel through the Tsunami Program Coordinator Position
2. Sustain and Improve Community Tsunami Warning Notification Infrastructure
3. Enhance Existing Community Tsunami Warning Notification Infrastructure
4. Install New tsunami evacuation and/or hazard zone signs in tsunami threatened communities and replace signs that have been damaged or stolen
5. Develop and reprint tsunami public education and outreach materials
6. Conduct Public Education and Outreach in collaboration with federal, state, tribal and local partners
7. Public outreach on lesson's learned and steps forward for Project Safe Haven Tsunami Vertical Evacuation Structures
8. Publish L1 inundation and current velocity model results for the Washington outer coast, Strait of Juan de Fuca, and northern Puget Sound
9. NTHMP Member Meeting Travel
10. Bainbridge Island Tsunami Hazard Assessment Modeling Study and a Comparative Study of GeoClaw/MOST Results
11. Two Tsunami Hazard Assessment Modeling Studies and a Comparison Study of MOST/GeoClaw Results
12. Support the NTHMP through existing multi-state projects, including bi-monthly publication of the NTHMP newsletter, TSUINFO Alert
13. Whatcom County to Vancouver Tsunami Hazard Assessment Modeling Study
14. Produce 3D Grid for Improved On-Land Inundation Modeling
15. Pedestrian Evacuation Modeling for Improved Assembly Area Support
16. Partner with relevant federal, state, tribal, and local partners to deliver NOAA Weather Radio Training
17. Improve staff understanding of the Tsunami Warning System through Tsunami Warning Training at the National Tsunami Warning Center



# Issues, Areas of Concern, and Collaborations

392-26

Passed



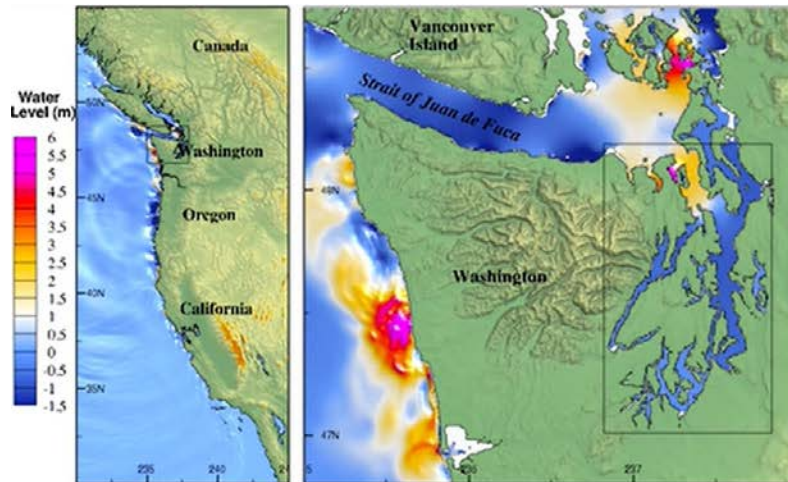
1. GRAB BEER
2. RUN LIKE HELL

2017

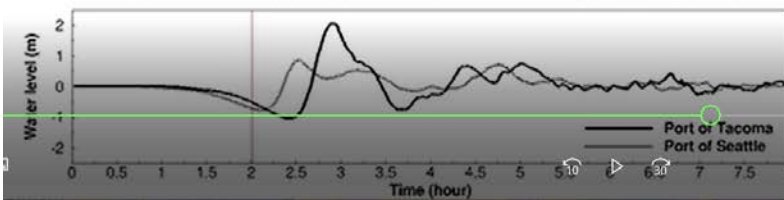
JAN	FEB	MAR	APR
1	2	3	4
5	6	7	8
9	10	11	12
13	14	15	16
17	18	19	20
21	22	23	24
25	26	27	28
29	30	31	
MAY	JUN	JUL	AUG
1	2	3	4
5	6	7	8
9	10	11	12
13	14	15	16
17	18	19	20
21	22	23	24
25	26	27	28
29	30	31	
SEP	OCT	NOV	DEC
1	2	3	4
5	6	7	8
9	10	11	12
13	14	15	16
17	18	19	20
21	22	23	24
25	26	27	28
29	30	31	



Social Science



Tsunami impact along the Puget Sound Caused by the  $M_w$  9.0 L1 EQ scenario



Highway 109 bridge over Copalis River - 1964

