

# California FY14-16 Priorities

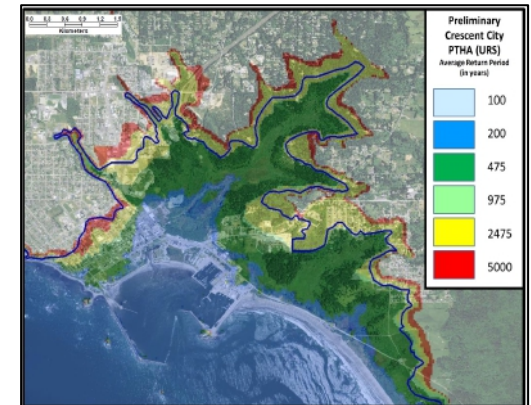
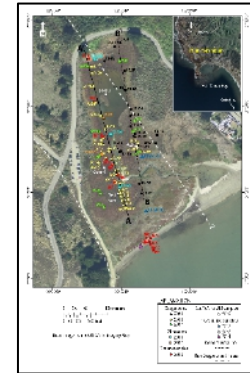


- 1: **Tsunami Preparedness and Response:** Vulnerability Assessments, Evacuation Analyses, Field Teams, Coastal Camera Network
- 2: **Tsunami Evacuation Response Playbooks:** Development in 20 Counties; Incorporation into ER Plans, Test/Exercise, Digital Implementation, Field Observers and Response Teams; Collaboration with Hawaii and Virgin Islands
- 3: **TsunamiReady®:** Education/Outreach Presentations/Workshops
- 4: **Probabilistic Modeling for Consistent Inundation Mapping (unsupported in FY15):** Map Development in 20 Counties; Support Risk assessment for land-use planning and building code establishment
- 5: **Maritime Modeling and Mapping for Planning and Preparedness:** Develop in 70+ Ports/Harbors; State and National Guidance; Collaboration with Hawaii and Virgin Islands
- 6: **Tsunami Vertical Evacuation Evaluation:** Evaluate alternatives for vertical safe haven for north coast community (Fairhaven, Humboldt Co.)
- 7: **Tsunami Mitigation, Land-Use, and Recovery Planning:** Application of PTHA products; guidance for maritime and community mitigation and recovery planning

# California-USGS Collaborations

## Past and Ongoing...

- **Participation in USGS Tsunami Source Work Group**
- **SAFRR Project – M9.1 Alaska Source Scenario**
  - Source characterization and analysis
  - Statewide tsunami deposit analysis (over 20 coastal sites)
  - Scenario vulnerability assessment
  - Damage evaluation and cost assessments (+\$10B)
  - Tsunami Policy Work Group
  - Education and outreach campaign (strong in southern California)
- **Vulnerability Assessment – State Inundation Maps**
- **Probabilistic Tsunami Hazard Analysis and Work Group**
  - Source characterization for Cascadia related to National Seismic Hazard Maps
  - Confirmation of PTHA methodologies
- **Pedestrian and Vehicular Evacuation Assessments**
- **International Post-Tsunami Field Teams**



# California-USGS Collaborations

## ...Ongoing and Future Needs (“Wish list”)

- **Participation in USGS Tsunami Source Work Group**
  - Evaluation of local tsunami source threats (Ventura/Pitas Pt. Fault; Monterey Canyon; landslides)
  - Consistency in Cascadia and Alaska/Aleutians source characterization for inundation mapping
  - Tsunami deposit analysis work (gaps = Monterey Bay; SoCal)
- **SAFRR Project**
  - Maritime tsunami damage analysis and development of fragility curves
  - Tsunami recovery guidance and planning using SAFRR scenario
- **Vulnerability Assessment/Benefit of using Tsunami Evacuation Playbooks**
- **Probabilistic Tsunami Hazard Analysis and Work Group**
  - Continued PTHA source characterization (esp. Alaska/Aleutians)
  - On-going evaluation of sources and methods used
- **Pedestrian and Vehicular Evacuation Assessments**
- **Vertical Evacuation Structure in Fairhaven (Humboldt Co.)**
  - Vertical evacuation assessments
  - Sediment transport modeling in dune setting
- **Real-time Tsunami Observation and Post-event Response Teams**

