

OREGON FY 2013 NTHMP ACCOMPLISHMENTS

George Priest, Oregon Dept. of Geology and Mineral Industries
Althea Rizzo, Oregon Emergency Management



TASK PROGRESS

1.1 Evacuation model for Seaside

- Scoping methodology at Cannon Beach finished
- Coordination meeting with local government
- Lidar data in hand

1.2 Time history data retrieval

- Sample ASCII files downloaded for GIS compatibility
- Binary file in hand for UNIX-based approaches
- Preliminary UNIX-based scripts developed for data retrieval.



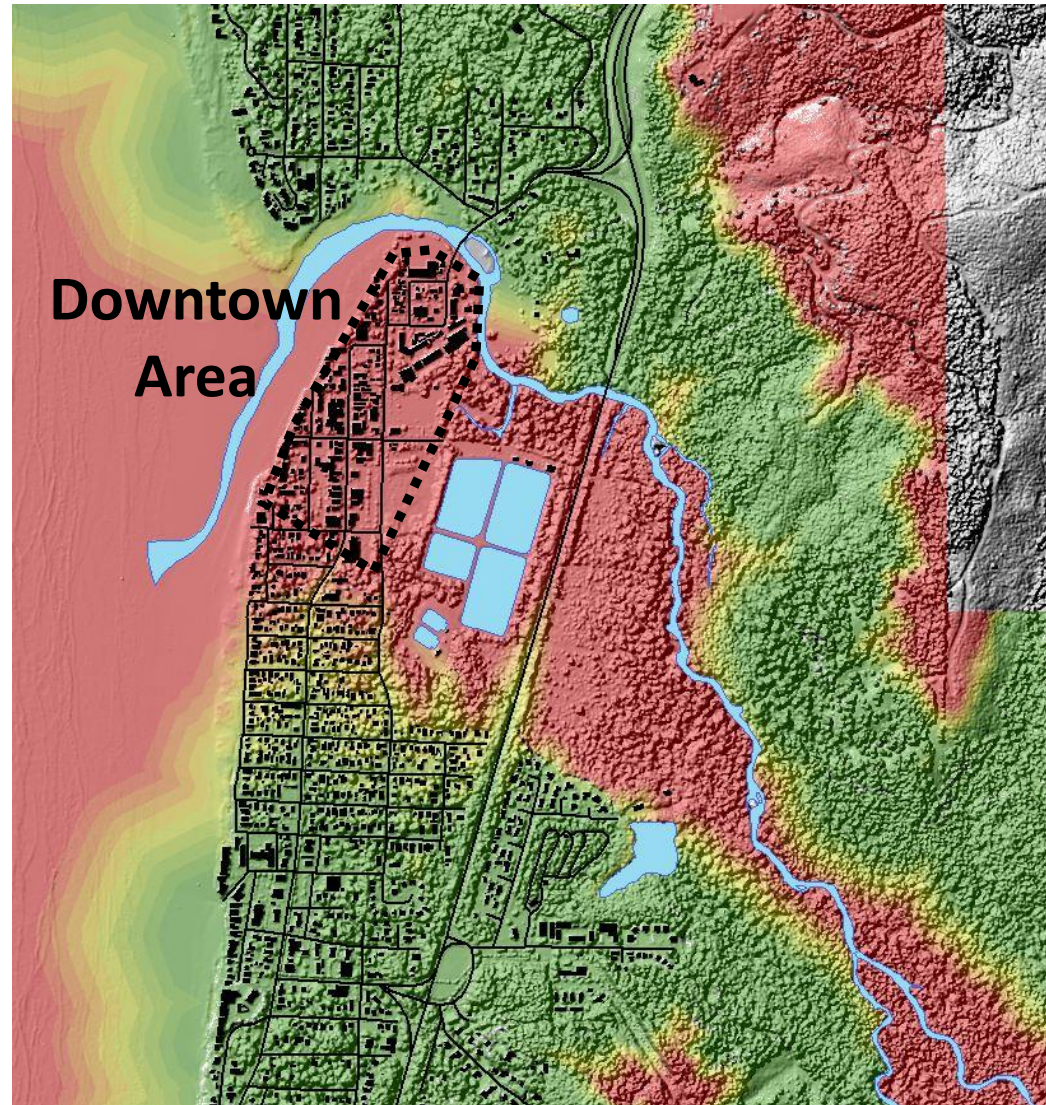
Evacuation Modeling - Cannon Beach

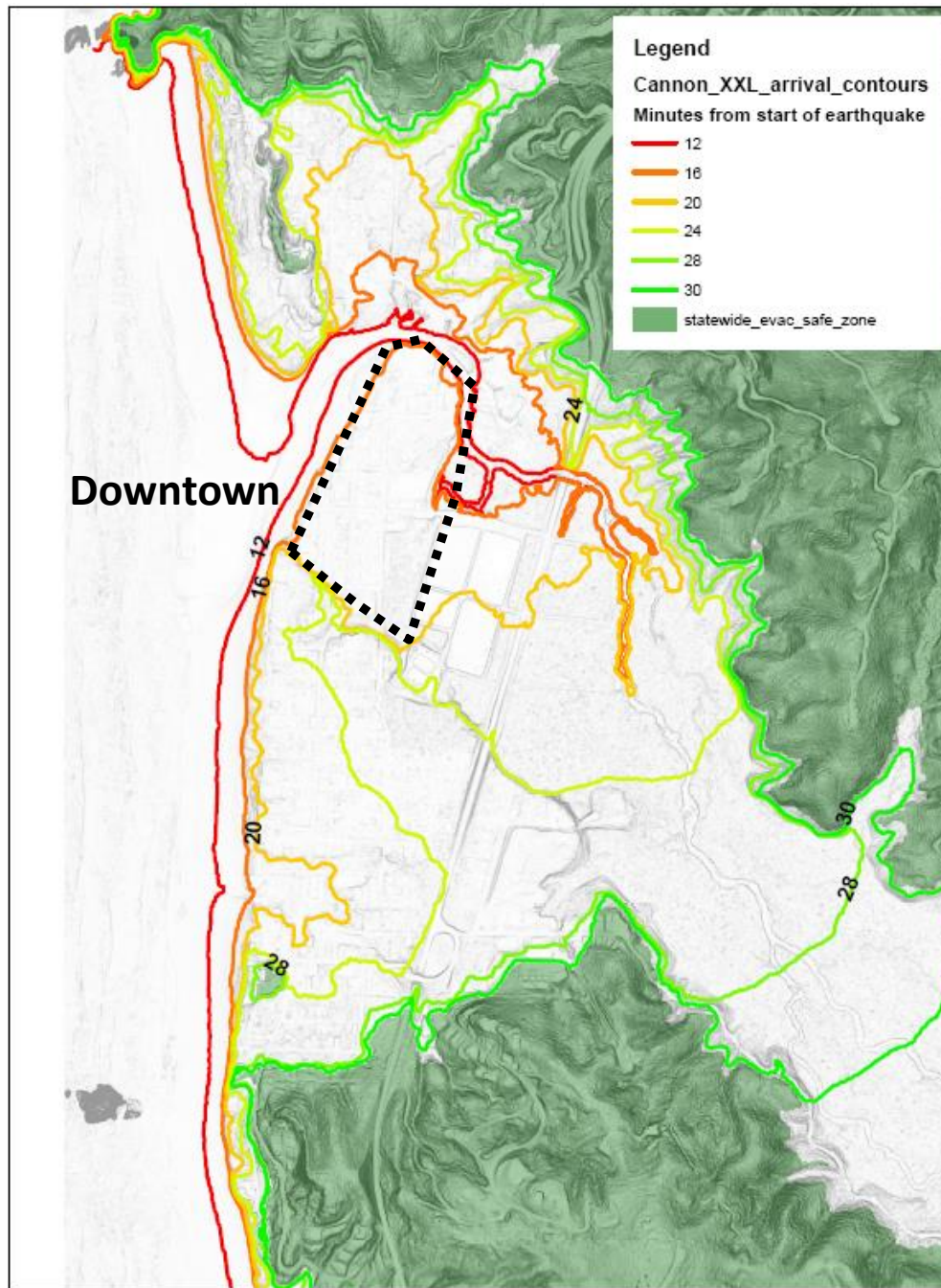
(max. walking speed = 4 ft/sec and no reduction from liquefaction)

Time gradient



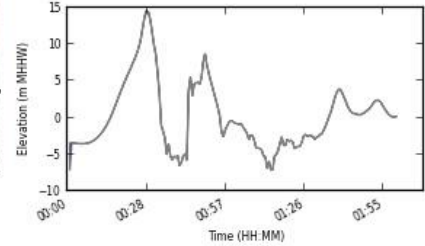
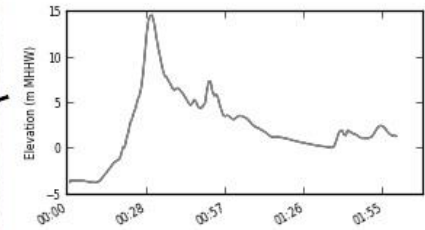
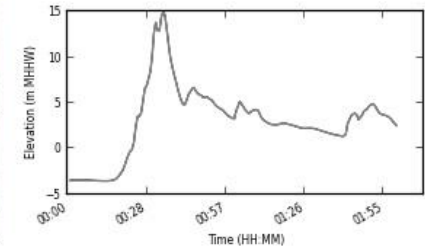
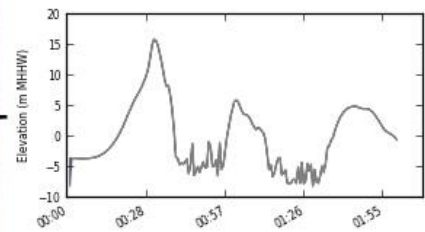
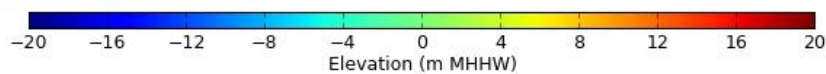
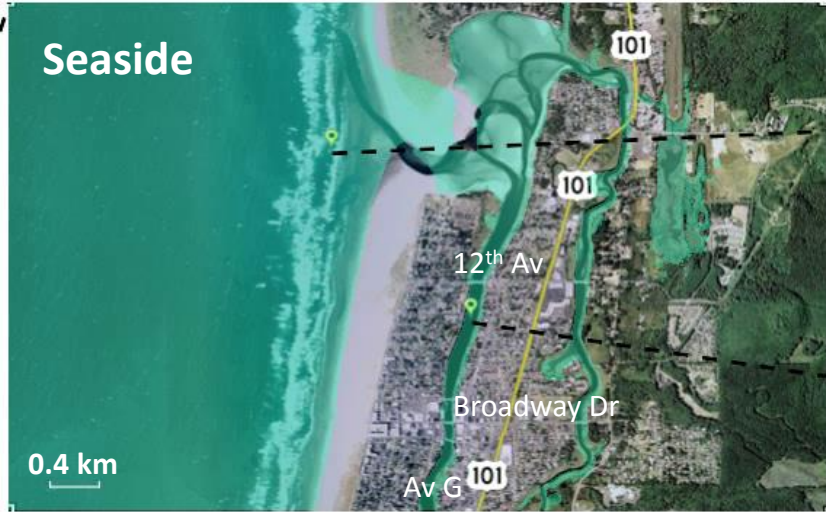
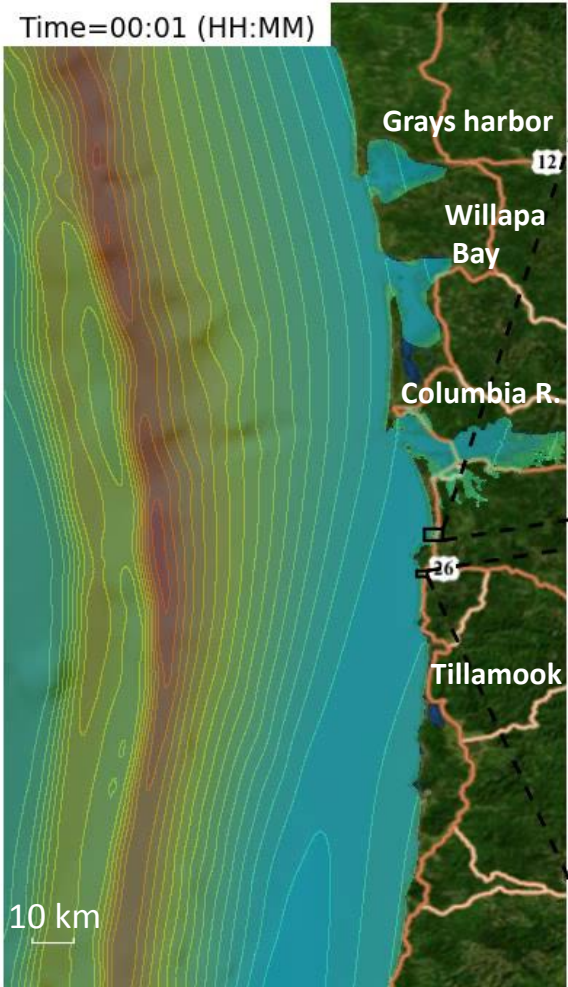
**Downtown
flooded by XXL1
at
~18 minutes**





ANIMATION OF TSUNAMI WAVE ARRIVALS FOR A XXL CASCADIA EVENT (Run04, Scenario XXL1, Grid B, Clatsop County)

Time=00:01 (HH:MM)



Task 1.3 Maritime Guidance (offshore safety/evacuation zones)

- **Maritime Advisory Committee assembled.**
- In addition to George Priest of DOGAMI, **MAC includes:**
 - **NOAA Marine Operations Center – Pacific** (Captain Wade Blake, Newport, OR)
 - **US Coast Guard** (Security Specialist Randy Clark)
 - **US Navy 3rd Fleet (Pacific)** (Lt. Cdr. Todd Stansfield)
 - **CA:** Rick Wilson (MMS Chair, CGS), Kevin Miller (NTHMP, Calif. Em. Mgt. Agency)
 - **WA:** Tim Walsh (Geologic Hazards Program mgr., Wash. Div. Geology & Earth Res.)
 - **Oregon leaders**
 - **Oregon Emergency Management** (Althea Rizzo)
 - **Columbia River Bar Pilots** (Dan Jordan)
 - **Elected official** (Terry Thompson, Lincoln County Commission Chair, ship captain, former legislator)
 - **Oregon Policy Advisory Council** (Scott McMullen, Chair)
 - **Oregon Coastal Zone Management Association + Port of Newport** (Walter Chuck, OCZMA Chair)
 - **Port of Portland** (Eric Burnette, Senior Waterways Planner)
 - **Scientists** (Joseph Zhang, VIMS; Pat Lynett, USC; Chris Goldfinger, OSU)



1.3 Maritime guidance ctd...

- Velocity, vorticity, minimum flow depth data extracted from representative grids.
- Sent to **MAC** for review (for Feb. 4 meeting):
 - Maps + graphs: Alaska Maximum + Cascadia XXL1
 - Peak velocities
 - Peak vorticities,
 - 3-knot velocity exceedance times,
 - Minimum flow depths
 - Summary of technical issues
 - Draft 2-zone guidance brochure
(adapted from California boating brochure)
- Working on wind wave amplification by tsunamis

2.1 Community outreach

- Support/county was determined by risk
- Feb. 28 deadline for proposals from counties

2.2 Pilot way finding study (community charrettes)

- Contracting with Portland Urban Architecture Research Laboratory

2.3 Tsunami clearinghouse website support- ongoing

2.4 Tsunami Road Show – scheduled March 11-27

2.5 Outreach to hotel & visitor industry

- Advisory committee assembled
- RFP for hotel video

3.1 Promote *TsunamiReady* - ongoing

3.2 Warning system tests & exercises – nothing to report

3.3 Rapid Deployment Tools for Distant Tsunami Response

- Advisory committee has had several teleconferences
- Initial concept of needed tools discussed; preliminary decisions made

